

Welcome!

This is a quick start guide for the GolfTraxx application for the Blackberry 8800 with built-in GPS receiver. There are separate quickstart guides for other platforms and devices such as PALM, TREO, Pocket PC, Garmin Ique and Windows Mobile devices with internal GPS. It is broken up into six short sections (STEPS) for ease of use.

It is designed to have a player up and running within 15 minutes or so. You can either use one of our sample courses or select from one of the 20,000 plus courses in our on-line database. If you are not able to find scorecard data for your course, you should be able to add course information for your own course.

If you can't find your course in our database and have a golf cart (and a GPS), you can capture the GPS locations (front, middle, back of each green, pin location, and tee targets) for each hole within another hour and a half or so. Alternatively, you can spend 30-40 minutes on Google Earth following our guide to mapping courses available at <http://pdazip.com/MappingCourses.pdf> which provides step by step instructions to creating a Google Earth kml file and then email it to us (frank_debenedetti@yahoo.com). We typically add Google Earth files to our database on the same day we receive them, then you can download them whenever you need them.

Since the GolfTraxx program remembers all of the information about each of the courses you download or capture, the data can be gathered once, then you can use it over and over.

We make all submitted course GPS coordinate mappings available to other GolfTraxx members via website download for FREE, so feel free to contribute your mapped courses generously.

We hope you'll enjoy this product and find your way to lower scores.

We would welcome any input you might have for improving our product.

Good luck and good golfing!

Frank DeBenedetti
President
GolfTraxx
<http://www.golftraxx.com>

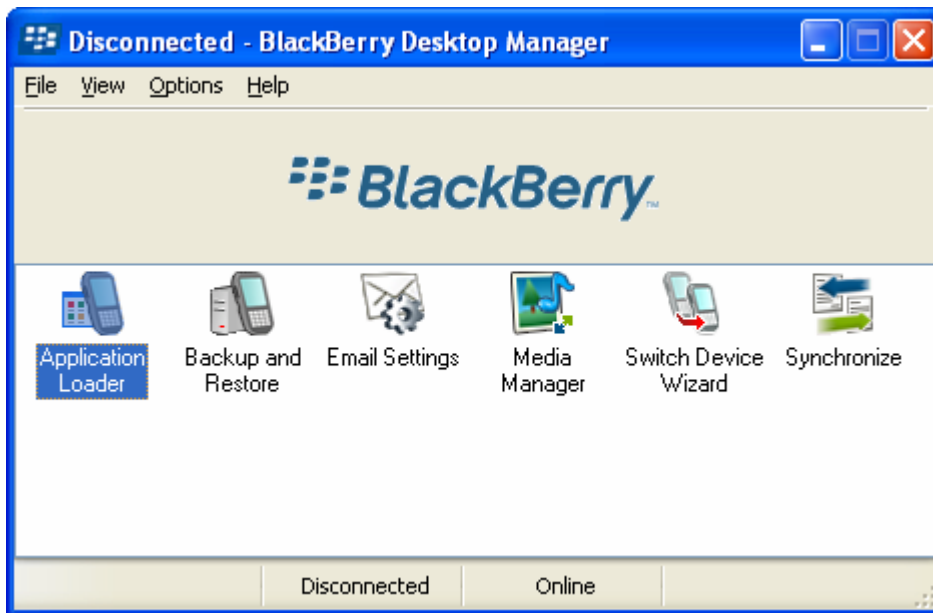
STEP ONE: INSTALLATION AND SETUP

This first step assumes that you have completed one of the following:

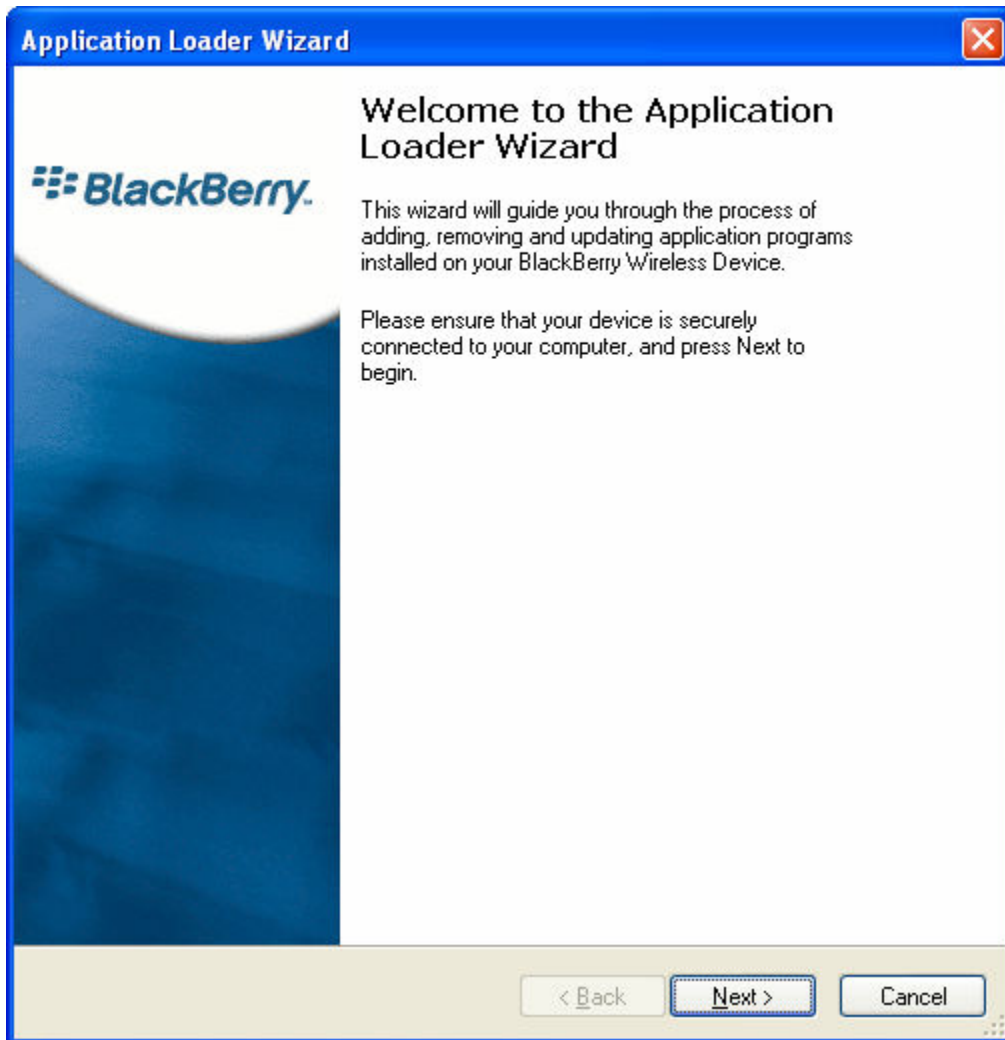
1. purchased and downloaded the blackberry zip file from our website then extracted the zip file onto a folder on your desktop, or
2. extracted the blackberry zip file from your golftraxx cd.

In addition, you will need to have the Blackberry Desktop Manager software loaded onto your desktop computer and the Blackberry 8800 operating system version 4.0.1 or later loaded onto your device. Make sure to obtain the correct version of the OS and Desktop Manager software for your device. Consult the blackberry website for more information.

Use the Blackberry Desktop Manager to load the golftraxx software onto your device.



With the Blackberry device connected to your computer with the synch cable, double-click on the Application Loader. This will launch a wizard that will enable you to identify the folder on your desktop computer that contains the GolfTraxx software.



In the golfraxx folder, select the golfrax.alx file when prompted.

The Application Loader will load the GolfTraxx program onto your device. DO NOT remove the sync cable from the device for at least 15 seconds after the installation completes and wait for any “working” or “in progress” dialog boxes to close. Blackberry OS has a delayed response after installing new software on the device which can corrupt the installation if the connection is broken.

If you receive a message stating that there were no new applications found for your device, you may need to install or remove then reinstall the Blackberry OS on your device. Be sure to obtain the correct version from the Blackberry website based on the brand of the device (eg. Cingular/ATT, Verizon, etc). Please note, at the present time Verizon has disabled the GPS functionality in the 8800 so GolfTraxx will not work on the device.

Assuming you have completed these steps, you should now see an icon called GolfTraxx in your applications on your PDA device.



Golftraxx leverages the internet connectivity of the device to download courses directly to the device. For this to work, GolfTraxx must be configured to use these features on the device.

To configure this, from the main screen on the device, click:

Settings -> Options -> Advanced Options -> Applications -> GolfTrax -> Click on Trackball -> Edit Permissions ->

Set both the **Connections** and **Interactions** options to **Allow** then click **Save**.

Golftraxx also offers the ability to provide distances in yards or meters, with the default being yards. To change the default, click the Settings button. Do not make any changes to any configuration fields. but note that you can specify whether you'd like to receive distances in yards or metres. The default is yards. If you select meters instead, it will convert yardages to meters. If you make a change, click **Save**.

STEP TWO: Downloading Courses Near You

This step assumes that you have launched the GolfTraxx application after successfully completing step 1.

You should now see the following main menu :



Enter the desired zip code into the form field called **Course, Zip Code** then click the track ball and click OK.

The screen shown on the next page with a list of courses from the golfraxx online database will be presented:



Next, select the desired course, and click the trackball to select it. The following dialog box will be presented:



Clicking **OK** will select the highlighted course, while clicking **Course Info** will display the data about the course such as address, phone number, par, etc. on the screen.

STEP THREE: Selecting the Right Tee

The GolfTraxx database has yardages for each tee box on most of the courses in our database. So in this step, after selecting the desired course, you simply pick the appropriate tee box.



Highlight the desired Tee Box and click the trackball to see the following Dialog box:



Clicking **OK** will select the highlighted tee, while clicking **More Info** will display the data about the particular tee box from the course on the screen.

STEP FOUR:

Once you have selected the Tees, you are ready to go start getting distances on your BlackBerry.

You should now see a screen showing the first hole information similar to the following:



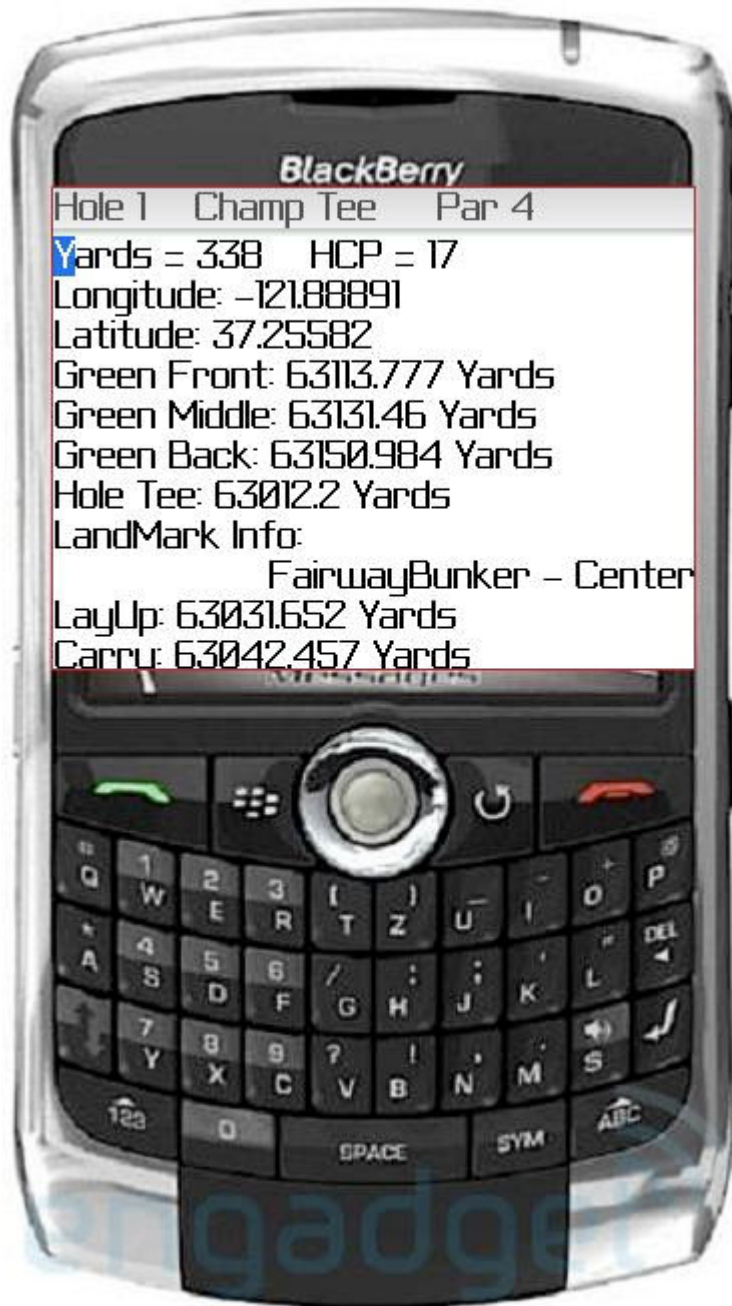
Of course yardages will vary based on your distance from the hole. If you do not see distances, then your GPS is not receiving data yet. Go outside to a location with a clear view of the sky and the GPS should start receiving data.

Please note that while GolfTraxx has over 20,000 course scorecards in its database, roughly 1,000 have GPS coordinates. If you find that the distances you are receiving on a particular course are way off (such as in the tens of thousands of yards), it may simply be that we have not yet mapped the course. Do yourself a favor and map a course using Google Earth and send it in to earn a free license for GolfTraxx. That will also give you

access to the URL which provides an updated list of all mapped golf courses that GolfTraxx has available.

STEP FIVE

That's it, you're now ready to start playing and obtaining shot distances and details. One of the nice things about this feature is that it allows you to resume play in a single click if the PDA does an automatic power shut-off to conserve resources.

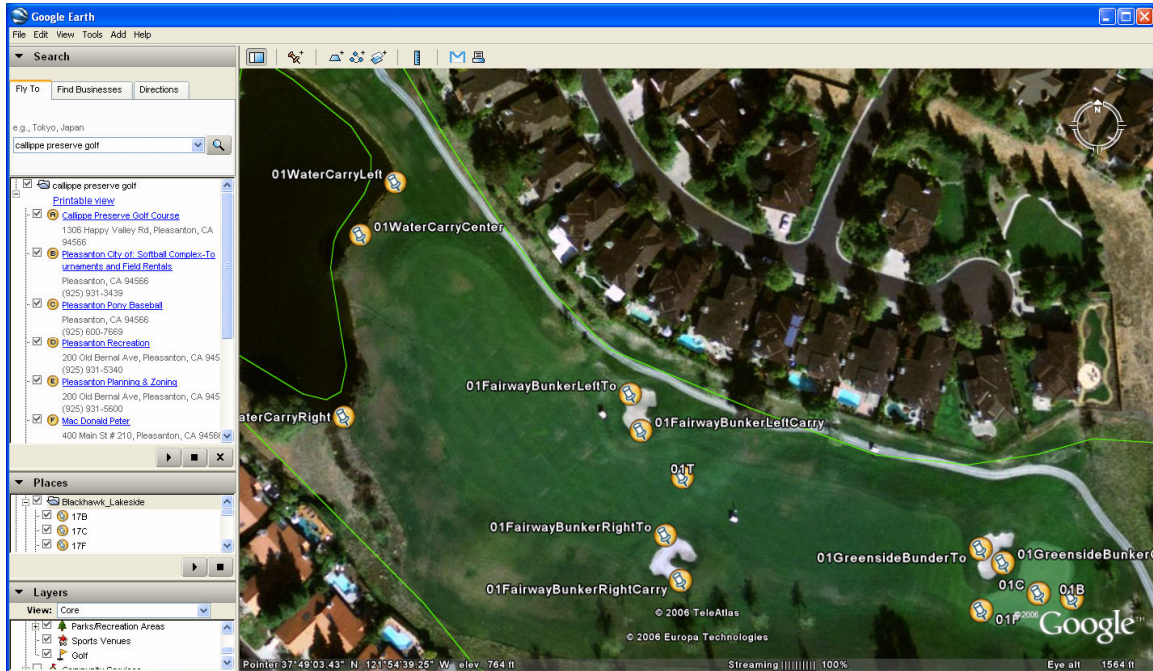


Note that many of golftraxx courses have “Extras” mapped in addition to the Front, Middle, and Back of green locations. Any Extra landmark defined for a particular hole

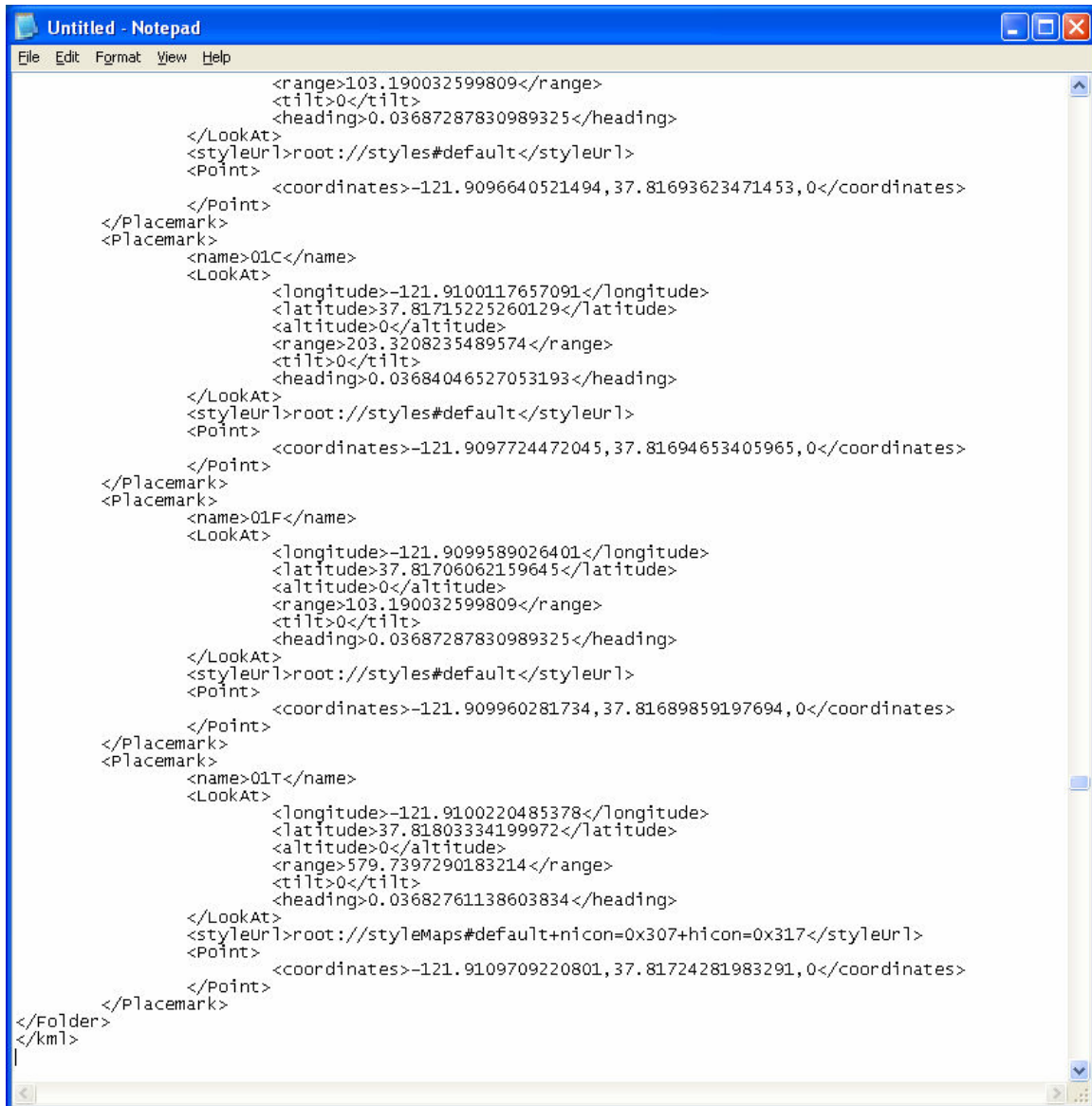
will be displayed in a dropdown for that hole, and distances will be displayed to reach and to carry which ever extra landmark is selected.

STEP SIX

Now that GolfTraxx has integrated Google Earth kmz files, each waypoint can be visually verified against the map containing the course. This feature will make proprietary GPS coordinates used by our competitors obsolete. When you view a Google Earth map, the waypoints can easily be seen, and by using the zoom in/zoom out tool in the upper right of the screen, you can get amazing granularity.



By copying/pasting the map file (shown in the left navigation on Google Earth into a text file, the coordinates themselves can be viewed as well in the xml. What you are interested in are the coordinates themselves shown as coordinate pairs in the XML.



```
        <range>103.190032599809</range>
        <tilt>0</tilt>
        <heading>0.03687287830989325</heading>
    </LookAt>
    <styleUrl>root://styles#default</styleUrl>
    <Point>
        <coordinates>-121.9096640521494, 37.81693623471453, 0</coordinates>
    </Point>
</Placemark>
<Placemark>
    <name>01C</name>
    <LookAt>
        <longitude>-121.9100117657091</longitude>
        <latitude>37.81715225260129</latitude>
        <altitude>0</altitude>
        <range>203.3208235489574</range>
        <tilt>0</tilt>
        <heading>0.03684046527053193</heading>
    </LookAt>
    <styleUrl>root://styles#default</styleUrl>
    <Point>
        <coordinates>-121.9097724472045, 37.81694653405965, 0</coordinates>
    </Point>
</Placemark>
<Placemark>
    <name>01F</name>
    <LookAt>
        <longitude>-121.9099589026401</longitude>
        <latitude>37.81706062159645</latitude>
        <altitude>0</altitude>
        <range>103.190032599809</range>
        <tilt>0</tilt>
        <heading>0.03687287830989325</heading>
    </LookAt>
    <styleUrl>root://styles#default</styleUrl>
    <Point>
        <coordinates>-121.909960281734, 37.81689859197694, 0</coordinates>
    </Point>
</Placemark>
<Placemark>
    <name>01T</name>
    <LookAt>
        <longitude>-121.9100220485378</longitude>
        <latitude>37.81803334199972</latitude>
        <altitude>0</altitude>
        <range>579.7397290183214</range>
        <tilt>0</tilt>
        <heading>0.03682761138603834</heading>
    </LookAt>
    <styleUrl>root://styleMaps#default+nicon=0x307+hicon=0x317</styleUrl>
    <Point>
        <coordinates>-121.9109709220801, 37.81724281983291, 0</coordinates>
    </Point>
</Placemark>
</Folder>
</kml>
```

